

CERTIFICATE OF LOCATION OF GOVERNMENT CORNER

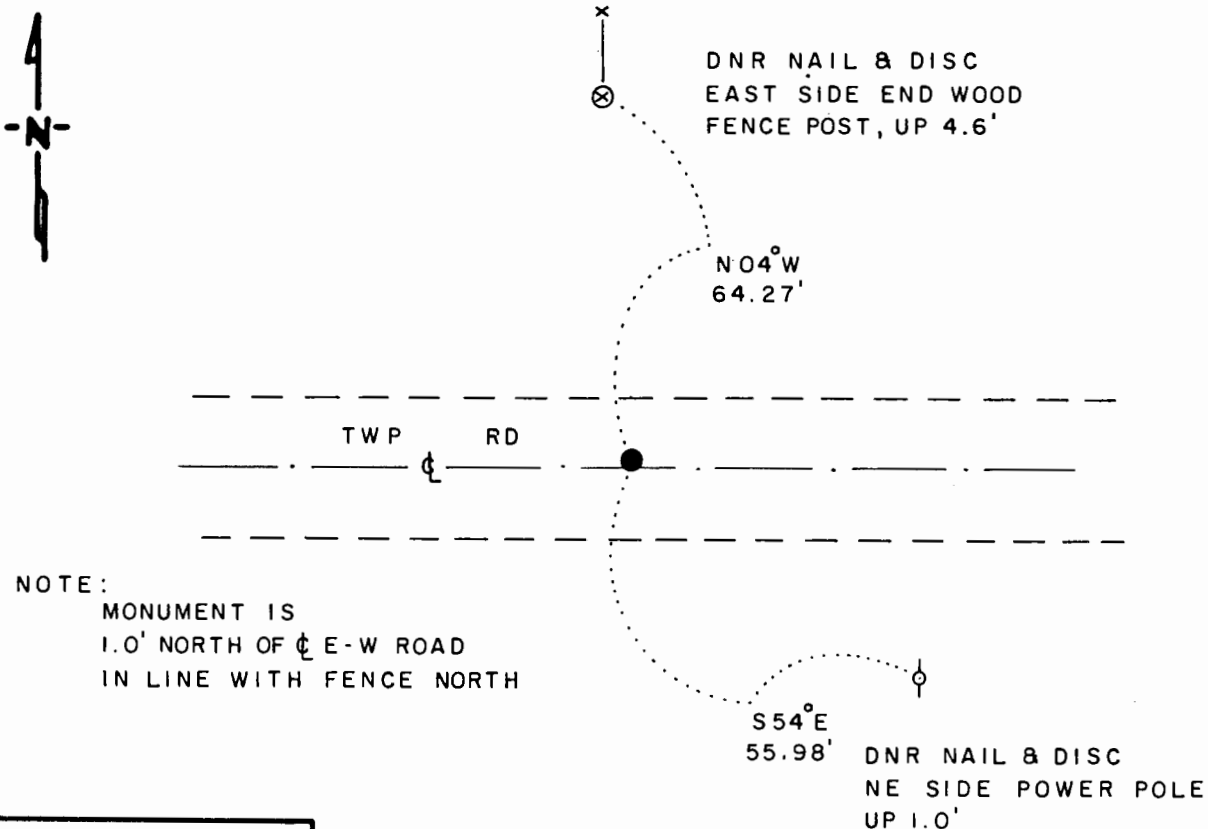
NORTH QUARTER Corner of Section 21, Township 105 N, Range 41 W, 5th P.M.

STATE OF MINNESOTA, County of MURRAY

At the corner location shown on the sketch

- On 3-22-90 found a 5/8" x 18" REBAR WITH MUTILATED PLASTIC
DATE RLS CAP, DOWN 0.4'
 - left monument as found, lowered monument, removed monument (explain)
- On 3-22-90 placed a 3/4" x 24" REBAR WITH ALUMINUM CAP STAMPED
DATE "DNR SURVEY MARKER", DOWN 0.5'

SKETCH OF REFERENCE TIES



1983 MURRAY COUNTY
 COORDINATE SYSTEM
 N = 116,013.222
 E = 498,045.594

BEARINGS OBSERVED WITH COMPASS

Statement of evidence relative to this corner location is on back of page

J.B.M. 4 - 25 - 90
 WMA 1488

I hereby certify that this document and the data contained herein was prepared by me or under my direct supervision.

Lowell R. Pomeroy Jr. 5-16-90
SIGNATURE DATE

Registration No. 17005

- Land Surveyor, Professional Engineer
- County Surveyor, County Engineer

OFFICE OF THE COUNTY RECORDER
 County of _____

I hereby certify that this document was filed in the Co. Recorders office at _____ M. on the _____ day of MAY 16 1990 A.D., 19 _____

County Recorder James V. Johnson
 By _____, Deputy

DOCUMENT NO. _____

North Quarter Corner of Section 21, Township 105 North, Range 41 West

The DNR Bureau of Engineering contacted the following for survey information:

Secretary of State's Office
Murray County Recorder's Office
Murray County Highway Engineer's Office
Bell Surveying, Inc., of Worthington
Madsen Land Surveying of Fairmont

- 1861 U.S. General Land Office notes obtained from the Secretary of State's Office show corner marked with a post in a mound with trench and pits as per instructions.
- 1898 Surveyor's Record Book A, page 76, obtained from the County Recorder's Office contains a survey by J. W. Woolstencroft. Survey shows a 6" by 6" by 12" stone in a mound at corner but does not indicate if found or set. The corner is shown:
40.07 chains (2644.62') from adjoining section corners
- No Date Field notes obtained from Bell Surveying, Inc., surveyed by Timothy Bell, RLS #16093, show that a hole was dug down to clay in search of a monument at corner but found nothing. Corner was established midway and on line between adjoining section corners 2645.44 feet apart. A description of what was set to mark corner is not given. The following ties are shown to corner:
on centerline of east-west township road
in line with fences north and south
masonry nail in fence post, 31.10 feet
masonry nail in fence post, 49.40 feet
- 1990 March, DNR Bureau of Engineering hired Rod Spartz of Iona to dig for evidence of corner. Rod said that a few years ago, Bell Surveying, Inc., contracted him to dig with a backhoe at corner in search of a stone. Rod said that he was unable to find a stone in the area that he excavated.
- 1990 March, DNR Bureau of Engineering found a 5/8 inch diameter by 18 inch long rebar with a mutilated plastic RLS cap at corner. Did NOT dig for record stone because Rod Spartz dug corner a few years ago. Discarded the found rebar and set a DNR Survey Marker in its place. Searched for but found no evidence of the record ties. The rebar was found to be:
1.0 feet north of the centerline of an east-west road in line with a fence north
2645.07 feet from the northeast corner of Section 21
2645.90 feet from the northeast corner of Section 20
0.28 of a foot south and 0.41 of a foot east of the computed lost position for corner

Analysis of the above information led the DNR Bureau of Engineering to conclude that the found rebar marks the location of the corner.